



NATURAL

The Natural-Products-Focused Approach

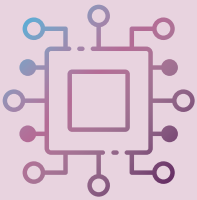
- Essential oil products come from natural substances—the flowers, roots, seeds, or leaves of a distinct plant species.
- And they are all chemical and electrically distinctive.
- The iTOVi Scanner carefully imitates the electrical frequencies of each product.
- Then records the body's natural, individualized response.
- These responses make up the contents of your scan report.



SKIN

The Skin-Focused Approach

- Your skin and its operations are closely linked to your wellness.
- Your skin is connected to many of the conscious and unconscious functions of your body and emotions.
- The passage of electricity through your skin reflects the strength of your physiological response to a stimulus.
- The iTOVi Scanner introduces product-specific frequencies to your body.
- Then it uses your skin to get a reading on your responsiveness.
- These responses make up the contents of your scan report.



TECHNOLOGY

The Technology-Focused Approach

- GSR is an amazing technology with many applications.
- It shows individualized, quantified measures of unconscious, emotional/physical reactions to external stimuli.
- Which means your results are likely to be quite different from someone else's.
- The iTOVi Scanner presents a wellness product frequency and measures your reaction, repeating this test with multiple frequencies.
- The strongest responses make up the contents of your scan report.



ELECTRICITY

The Electricity-Focused Approach

- The human body can conduct electricity.
- The human body also generates its own electricity, using it for many vital functions.
- The iTOVi Scanner takes advantage of the body's natural, precise electrical workings to test your body's natural response to subtle, wellness-product frequencies.
- The iTOVi Scanner measure and records your body's electrical response to each frequency.
- The strongest responses make up the contents of your scan report.



COMPARE

The Comparison Approach

The iTOVi Scanner is like the Microsoft Band, FitBit, and Jawbone Up.

They use GSR to collect live, individualized wellness data from your body.

GSR is perfect for this because the electricity in your skin is tied to so many wellness factors.

The iTOVi Scanner uses GSR, not just to monitor, but to test your body's reaction to wellness products.

This results in great insight into your wellness AND knowledge of how best to use your wellness products.